

AJ Arm Standard Series							
Model	Reach ( A ) (feet)	Primary Arm ( B ) (inches)	Secondary Arm ( C ) (inches)	Capacity* (lbs)	Weight (lbs)	Deflection (inches)	
						Straight	90°
AJ 1250 - 8	8	56	40	1250	495	0.688	0.438
AJ 1110 - 9	9	63	45	1110	519	0.750	0.500
AJ 1000 - 10	10	70	50	1000	543	0.813	0.563
AJ 910 - 11	11	77	55	910	567	0.875	0.625
AJ 835 - 12	12	84	60	835	591	1.000	0.688
AJ 770 - 13	13	91	65	770	615	1.063	0.750
AJ 715 - 14	14	98	70	715	639	1.125	0.813
AJ 665 - 15	15	105	75	665	663	1.250	0.875
AJ 615 - 16	16	112	80	615	687	1.313	0.938

\* Includes payload and end-effector  
 Electric Option: 460v, 3 phase, 20 amp  
 Air Option: 3/4" air lines. SCFM will vary on hoist and/or tooling

POSITECH RESERVES THE RIGHT TO CHANGE SPECIFICATIONS, DESIGNS, OR PRICES, OR DISCONTINUE MODELS OR OPTIONS, AT ANY TIME, WITHOUT NOTICE OR INCURRING OBLIGATION.

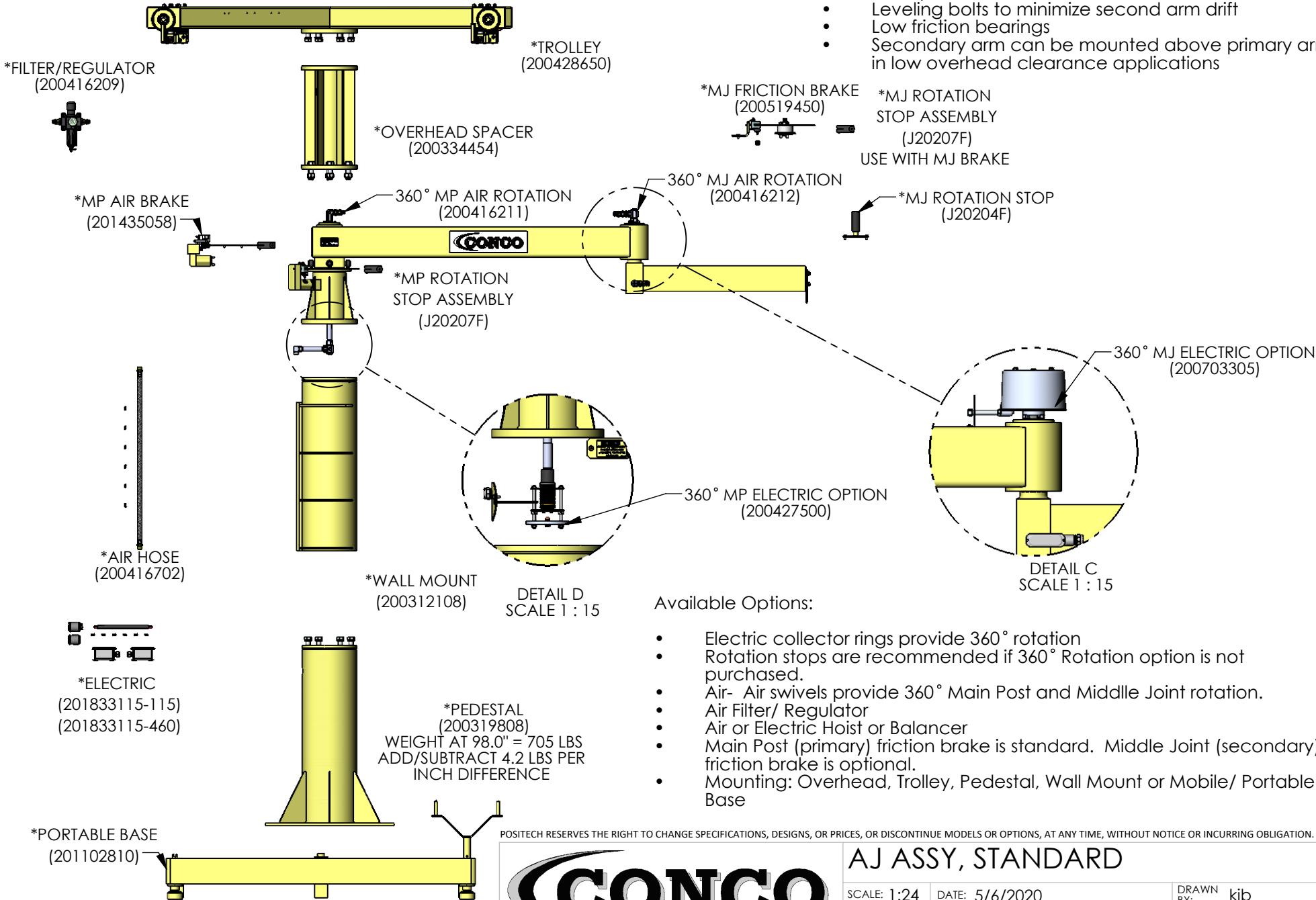


## AJ ASSY, STANDARD

SCALE: 1:24	DATE: 5/6/2020	DRAWN BY: kjb
CLASS CODE: P750	DWG NO: AJ-STANDARD	SHT: 1 of 2
		REV:

Standard Features:

- Heavy duty construction for long life
- Wide variety of standard lengths and capacities
- Main post friction brake
- Leveling bolts to minimize second arm drift
- Low friction bearings
- Secondary arm can be mounted above primary arm in low overhead clearance applications



Available Options:

- Electric collector rings provide 360° rotation
- Rotation stops are recommended if 360° Rotation option is not purchased.
- Air- Air swivels provide 360° Main Post and Middle Joint rotation.
- Air Filter/ Regulator
- Air or Electric Hoist or Balancer
- Main Post (primary) friction brake is standard. Middle Joint (secondary) friction brake is optional.
- Mounting: Overhead, Trolley, Pedestal, Wall Mount or Mobile/ Portable Base

POSITECH RESERVES THE RIGHT TO CHANGE SPECIFICATIONS, DESIGNS, OR PRICES, OR DISCONTINUE MODELS OR OPTIONS, AT ANY TIME, WITHOUT NOTICE OR INCURRING OBLIGATION.



AJ ASSY, STANDARD

SCALE: 1:24	DATE: 5/6/2020	DRAWN BY: kjb
CLASS CODE: P750	DWG NO: AJ-STANDARD	SHT: 2 of 2 REV:

ALL DESIGNS, SKETCHES AND DRAWINGS ARE THE PROPERTY OF POSITECH CORPORATION LETTING, OR ALLOWING TO BE LET, THE KNOWLEDGE FOR DESIGN AND/OR FABRICATION FROM SAID DESIGNS, SKETCHES OR DRAWINGS WITHOUT THE WRITTEN CONSENT OF POSITECH CORPORATION IS EXPRESSLY FORBIDDEN.