

AJ Arm Light Series							
Model	Reach (A) (feet)	Primary Arm (B) (inches)	Secondary Arm (C) (inches)	Capacity* (lbs)	Weight (lbs)	Deflection (inches)	
						Straight	90°
AJ 310 - 8	8	56	40	310	215	0.688	0.438
AJ 280 - 9	9	63	45	280	239	0.750	0.500
AJ 250 - 10	10	70	50	250	263	0.813	0.563
AJ 230 - 11	11	77	55	230	287	0.875	0.625
AJ 210 - 12	12	84	60	210	311	1.000	0.688
AJ 190 - 13	13	91	65	190	335	1.063	0.750
AJ 180 - 14	14	98	70	180	359	1.125	0.813
AJ 170 - 15	15	105	75	170	383	1.250	0.875

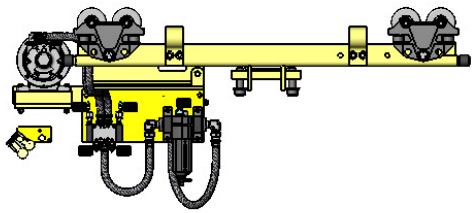
* Includes payload and end-effector
 Electric Option: 460v, 3 phase, 20 amp
 Air Option: 3/4" air lines, SCFM will vary on hoist and/or tooling

POSITECH RESERVES THE RIGHT TO CHANGE SPECIFICATIONS, DESIGNS, OR PRICES, OR DISCONTINUE MODELS OR OPTIONS, AT ANY TIME, WITHOUT NOTICE OR INCURRING OBLIGATION.

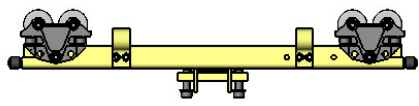


AJ ASSY, LIGHT

SCALE: 1:18	DATE: May-09-2017	DRAWN BY: kps	
CLASS CODE: 750	DWG NO: AJ-LIGHT	SHT: 1 of 2	REV:



*TROLLEY,
MOTORIZED
(A26058F)



*TROLLEY,
NON-MOTORIZED
(A26057F)

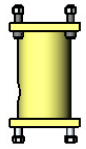
Standard Features

- Heavy duty construction for long life
- Wide variety of standard lengths and capacities
- Main post friction brake
- Leveling bolts to minimize second arm drift
- Low friction bearings
- Secondary arm can be mounted above primary arm in low overhead clearance applications

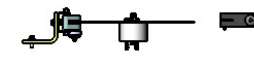
*FILTER/REGULATOR
(200416200)



*OVERHEAD SPACER
(200310088)



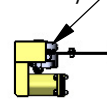
*MJ FRICTION BRAKE
(200512950)



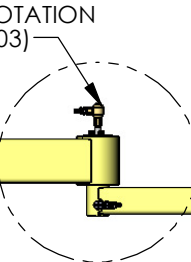
*MJ ROATIONAL
STOP ASSEMBLY
(J20207F)
USE WITH MJ BRAKE



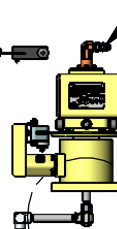
*MP AIR BRAKE
(201504755)



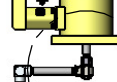
*360° AIR MJ ROTATION
(200416203)



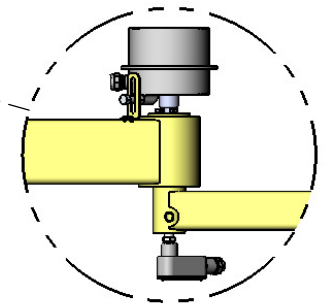
*360° AIR MP ROTATION
(200416202)



*MP ROATIONAL
STOP ASSEMBLY
(J20207F)

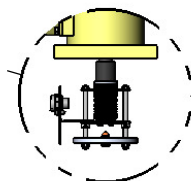


*MJ ROTATIONAL STOP
(J20204F)



*360° ELECTRIC MJ OPTION
(200416207)

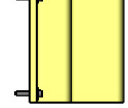
*360° ELECTRIC MP OPTION
(200416206)



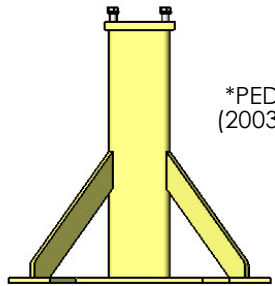
*AIR HOSE
(200416701)



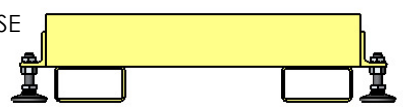
*WALL MOUNT
(200911725)



*PEDESTAL
(200320200)



*PORTABLE BASE
(C51632F)



Available Options:

- Electric collector rings provide 360° Main Post and Middle Joint Rotation.
- Rotation stops are recommended if 360° Rotation option is not purchased.
- Air swivels provide 360° Main Post and Middle Joint Rotation.
- Air Filter/ Regulator
- Air or Electric Hoist or Balancer
- Main Post (primary) friction brake is standard. Middle Joint (secondary) friction brake is optional.
- Mounting: Overhead, Trolley, Pedestal, Wall Mount or Mobile/ Portable Base
- 3/8 NPT hose connections for air option

POSITECH RESERVES THE RIGHT TO CHANGE SPECIFICATIONS, DESIGNS, OR PRICES, OR DISCONTINUE MODELS OR OPTIONS, AT ANY TIME, WITHOUT NOTICE OR INCURRING OBLIGATION.



AJ LIGHT WITH OPTIONS		SCALE: 1:18	DATE: May-09-2017	DRAWN BY: kps	
		CLASS CODE: 750	DWG: NO: AJ-LIGHT	SHT: 2 of 2	REV:

ALL DESIGNS, SKETCHES AND DRAWINGS ARE THE PROPERTY OF POSITECH CORPORATION LETTING, OR ALLOWING TO BE LET, THE KNOWLEDGE FOR DESIGN AND/OR FABRICATION FROM SAID DESIGNS, SKETCHES OR DRAWINGS WITHOUT THE WRITTEN CONSENT OF POSITECH CORPORATION IS EXPRESSLY FORBIDDEN.

PEDESTAL MOUNTING REQUIREMENTS

Foundation Design Requirement for Existing Floor

1. The foundation must have four 3/4"-10 SAE 2 studs spaced 90 degrees apart on a 38-3/16" diameter bolt circle (27" x 27" square) extending 3" above the foundation to mate with and extend through mounting holes in the pedestal base. Stud load approximately 1,000 pounds maximum. Position the pedestal on the foundation with respect to the opening for the air supply to minimize piping.
2. Attach the pedestal to the foundation with four (4) lockwashers and four (4) SAE 2 steel nuts. Shim as required to level kingpin mounting ring located on the pedestal top.
3. Foundation must meet the following criteria.
 - a. 5" minimum thick concrete floor with netting type reinforcement.
 - b. 3000 p.s.i. minimum compressive strength.
 - c. 2500 pounds/square foot minimum soil bearing beneath concrete.
 - d. No cracks, fractures, expansion joints, etc. with minimum floor area indicated. (See "f").
 - e. Pedestal base shall be mounted in center with sides parallel to sides of floor area indicated.
 - f. Minimum floor area which meets all above requirements must be 8.5' x 8.5'.
 - g. Mount anchor studs as indicated above

Equipment	Anchor Bolt Size	Bolt Torque Ft Lb	Bolt Circle Dia.	No. of Anchor Bolts	Total Equipment Weight	Maximum Static Moment
LB400 Series Balancer, AJL165	3/4"-10	173	38-3/16"	4	1655 Lb	2400 Ft Lb

